

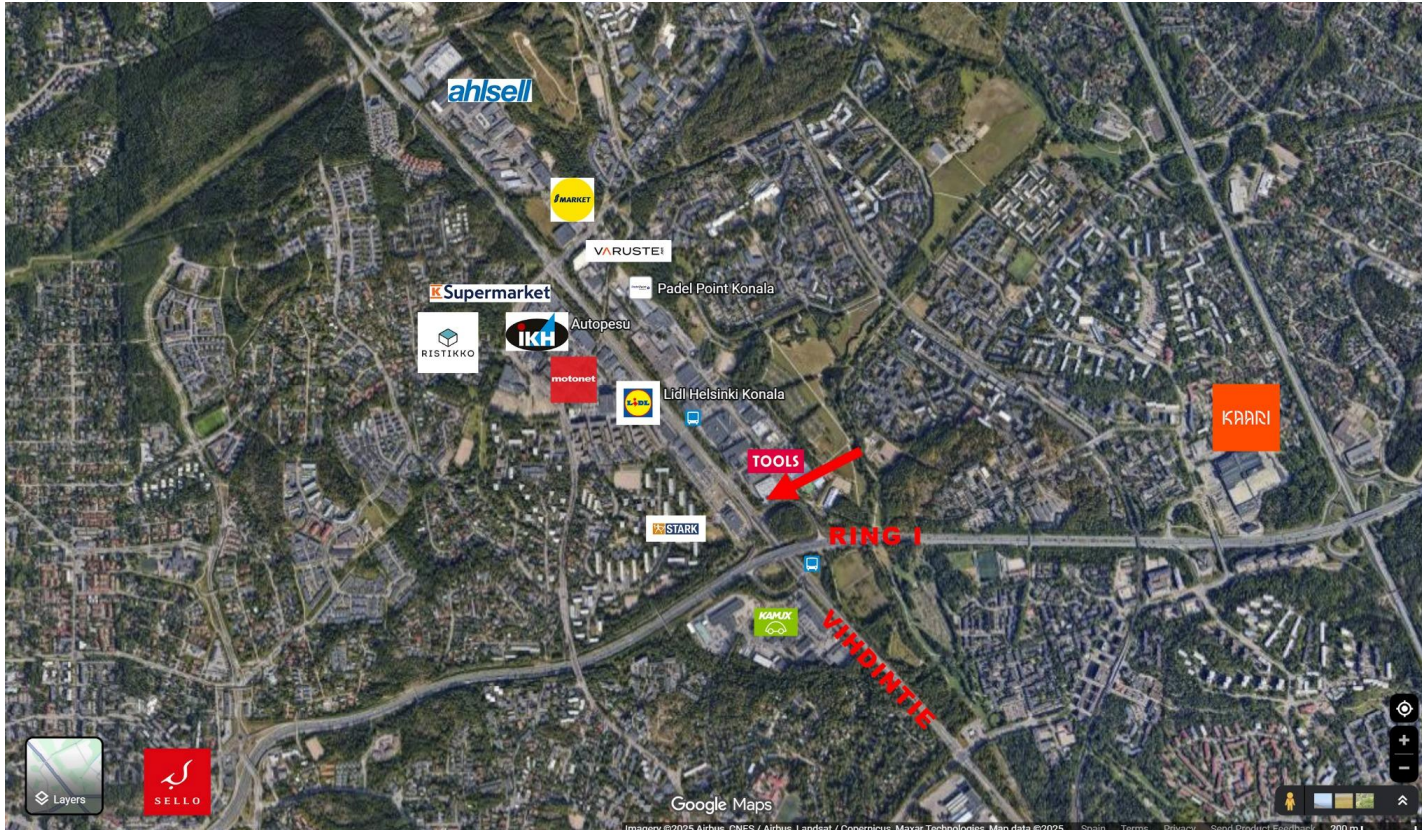
Prime 1188 m² Retail Opportunity in Helsinki

Central high-visibility corner location at Kehä I and Vihdintie in Konala



Ruosilankuja 3, Helsinki | Rent directly from the owner

Central location & exceptional visibility



Key facts

- Intersection of Kehä I and Vihdintie
- Approx. 120,000 cars pass daily
- Great visibility to Vihdintie
- Easy access for customers and deliveries

Why this space is becoming available



Tenant transition

- Rexel was acquired by Ahlsell
- They are relocating into Ahlsell's larger nearby store
- Opportunity: secure a proven retail/wholesale location
- Well maintained property and professional private ownership

Space at a glance



Highlights

- Store / showroom space: 1,188 m²
- Flexible layout suitable for retail, showroom, or trade counter
- Good customer access and loading practicality
- Air conditioning
- Great staff break room

Interior



Bright sales floor and modern lighting



Huge customizable open plan

Operations & storage

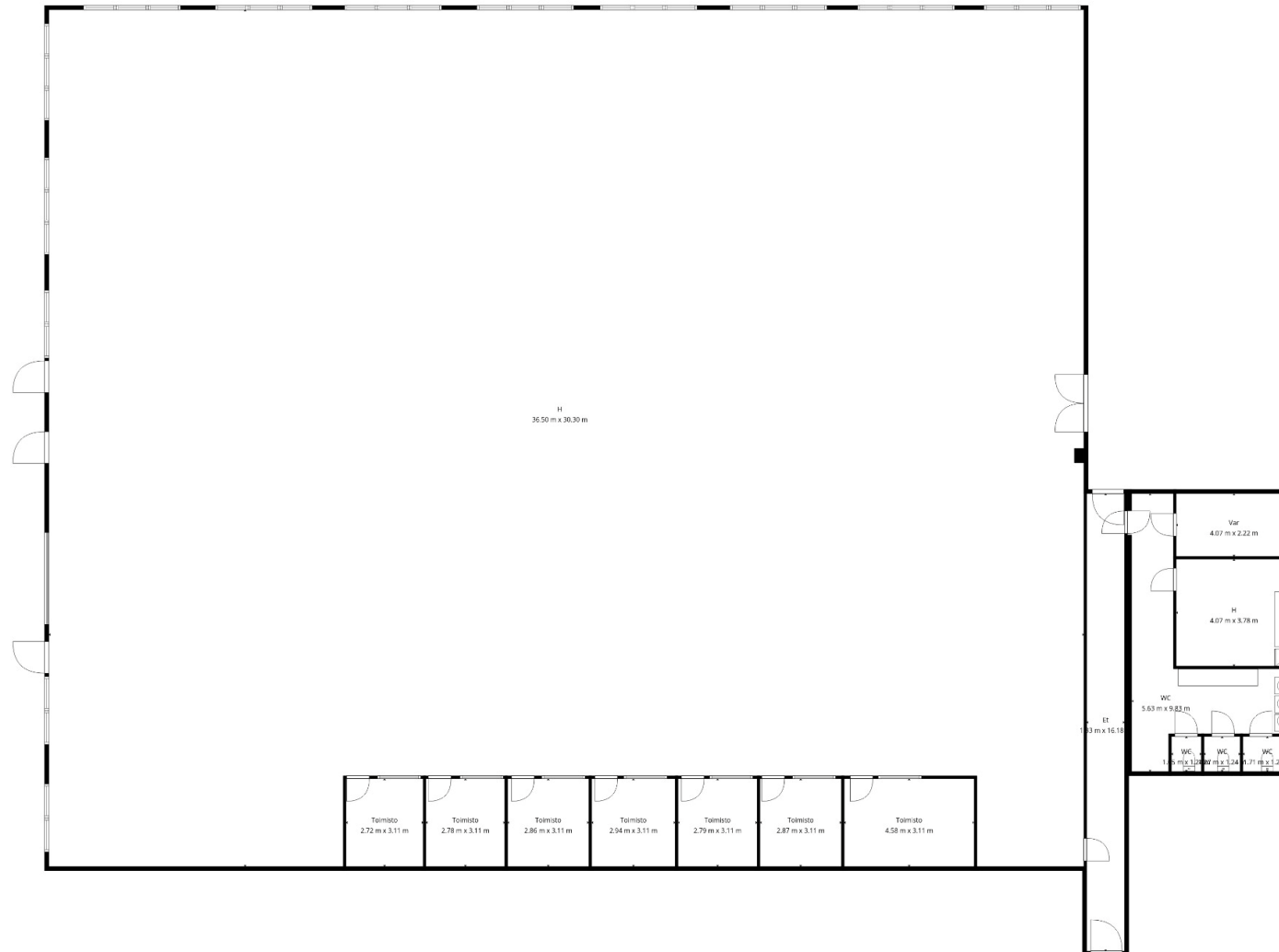


Full wall large windows towards Vihdintie



Space to support daily logistics

Amenities & commercial terms



On-site advantages

- Free parking
- 15 × 22 kW EV charging stations
- Modern yard security system
- Well maintained property
- Popular lunch café in building

Monthly rent

€ 22,900

Rent directly from the owner

Book a viewing

Gallery & details

<https://www.bk-group.com/konala/gallery-1188.html>

Contact

Sebastian Koreneff

seba@bk-group.com

+ 358 500 643 500

Ruosilankuja 3, Helsinki

Corner visibility to Vihdintie | 120,000 cars/day | Free parking + EV charging